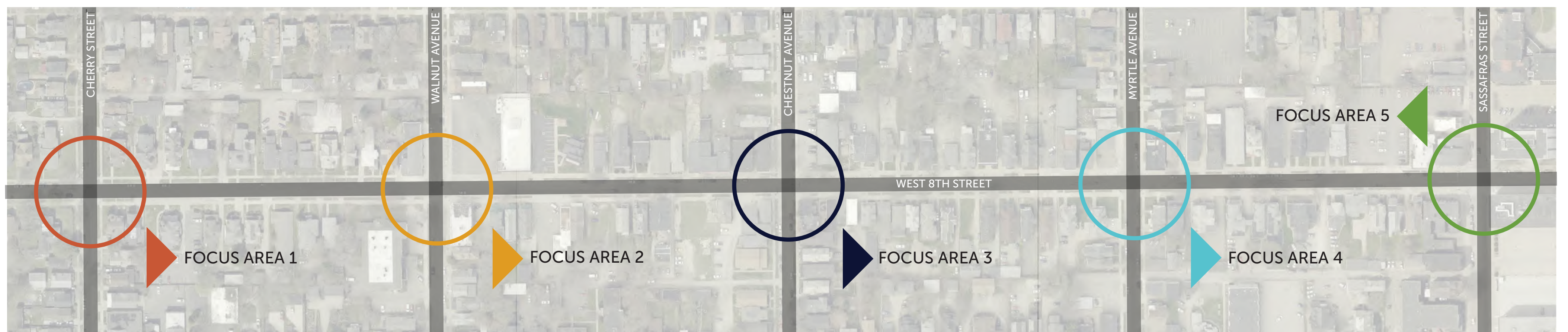


West 8th Street - Streetscape

Project Study Area

The focus area for this study is the West 8th Street corridor, from Cherry Street to Sassafras Street. This area is approximately 2,926 lineal feet or .55 miles in length. The right-of-way width is 60', with a 28' cartway (road) and 16' sidewalk areas that include treelawns and paved sidewalks of varying widths.



Project Goals

- neighborhood identity
- increased safety
- improved functionality
- durability
- recognition of heritage
- support for a mixture of commercial and residential uses
- encourage additional investment (public & private)

Site Context



Our West Bayfront

City Architecture

West 8th Street - Streetscape

Streetscape Elements



Cut metal district banners at intersections



Fabric Banners



District business signage



Decorative pole wraps



Large colorful planter groupings



Midblock planters



Our West Bayfront trash cans



Gannon-style pedestrian lights

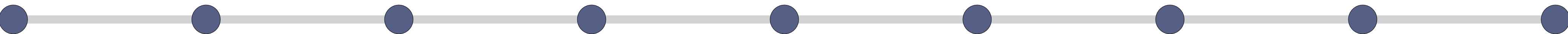
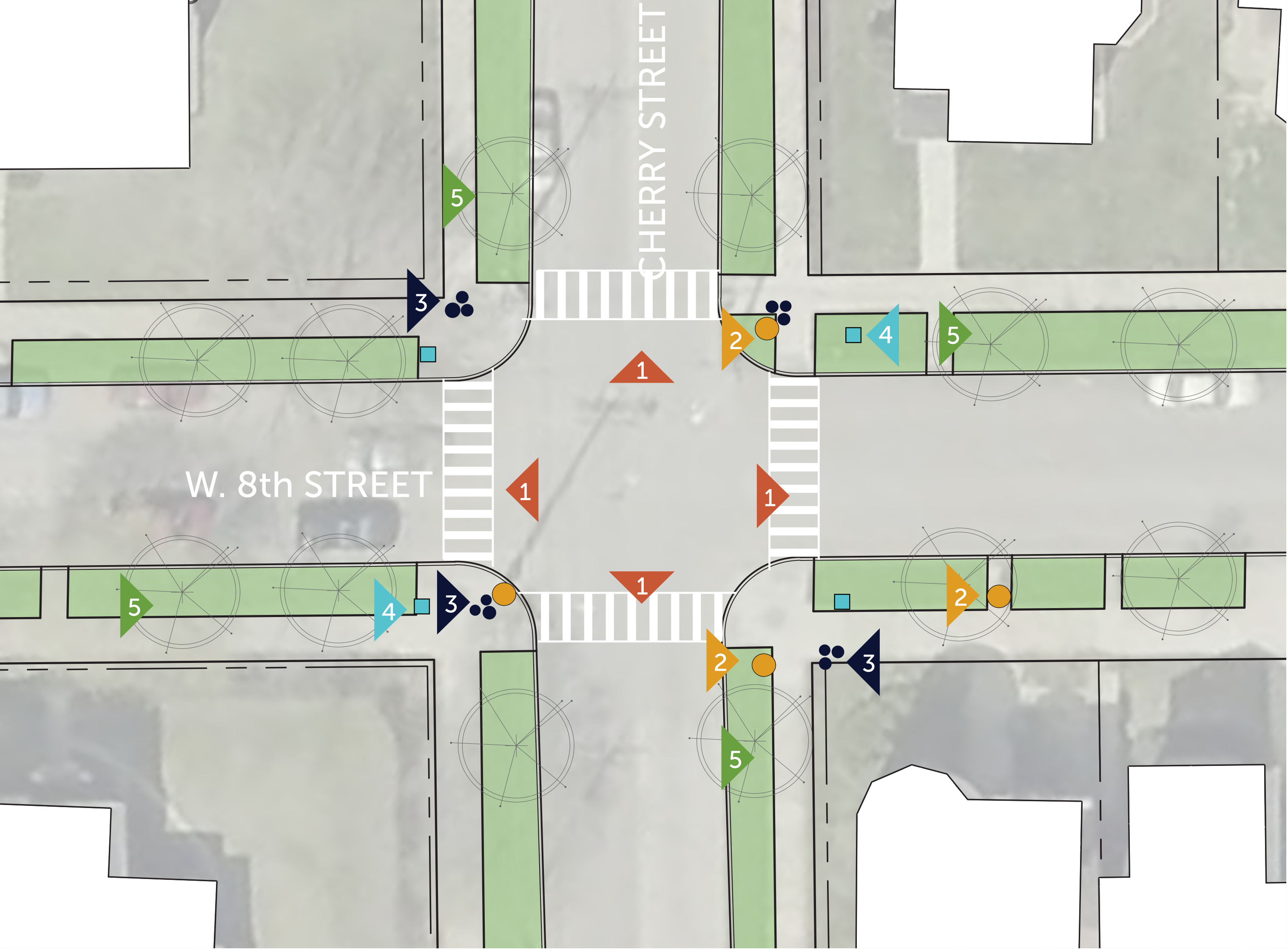
Residential lamp posts



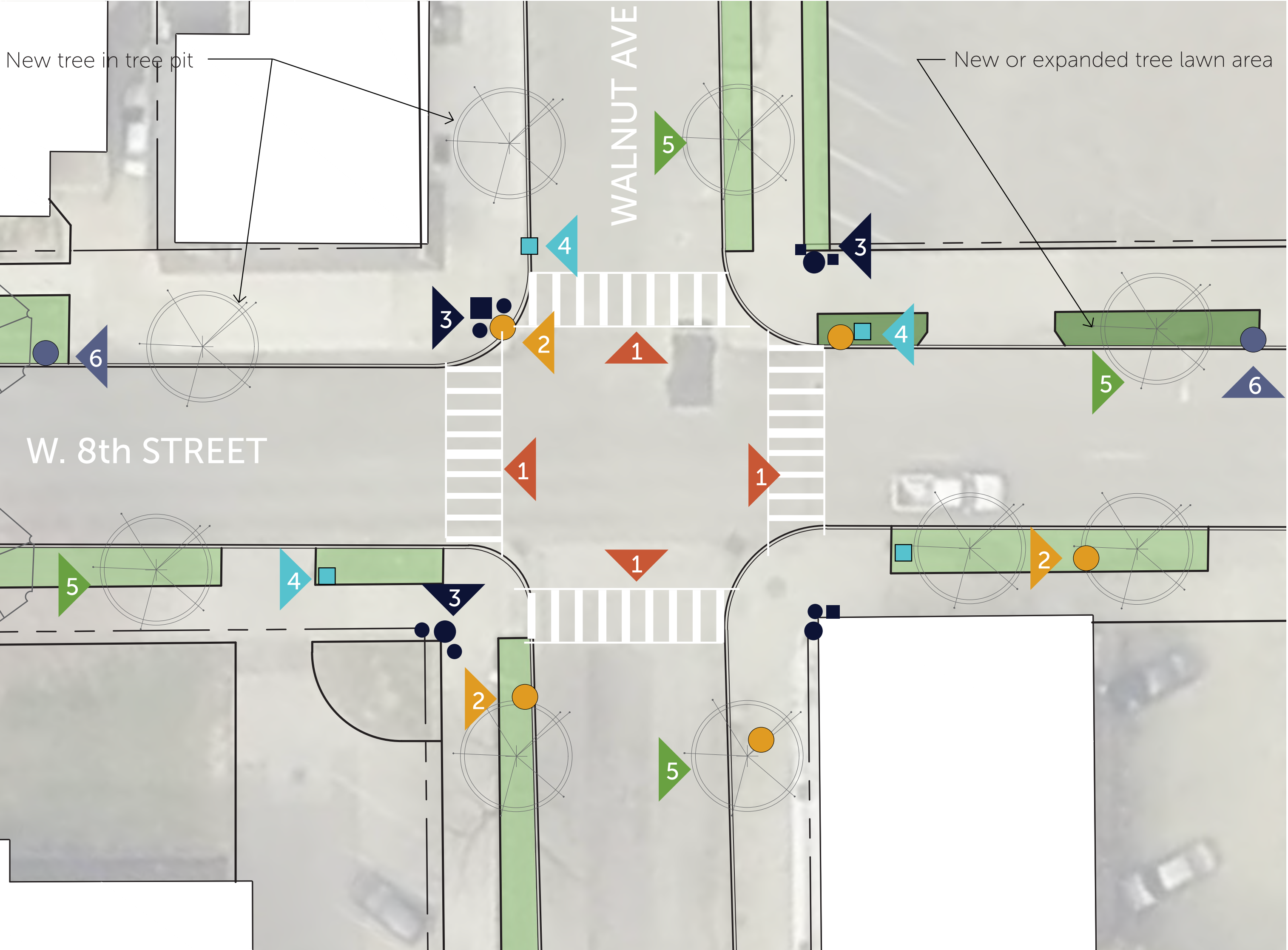
Artistic Crosswalks

West 8th Street - Streetscape

Focus Area 1 Cherry Intersection



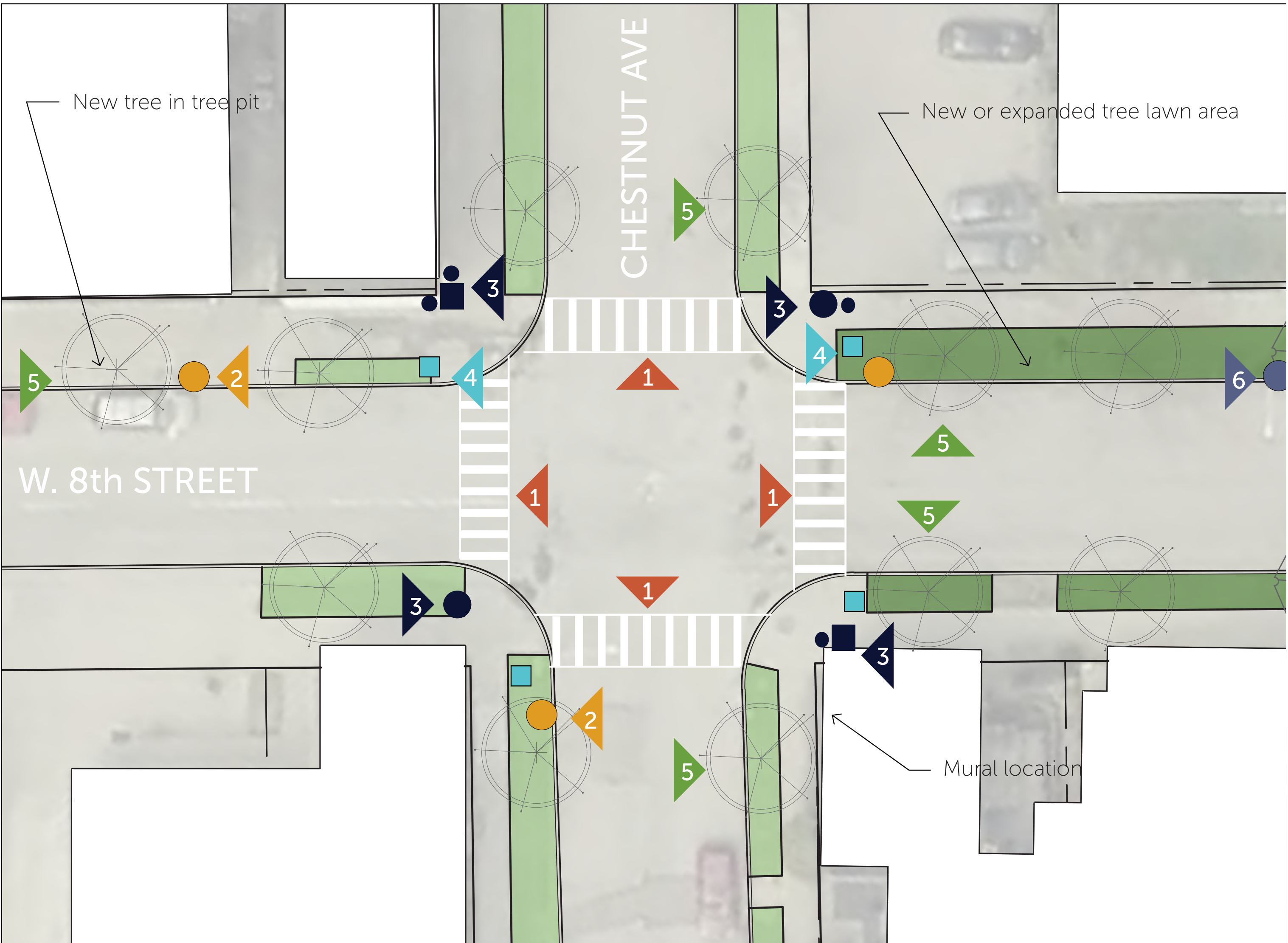
Focus Area 2 Walnut Intersection



West 8th Street - Streetscape

Focus Area 3

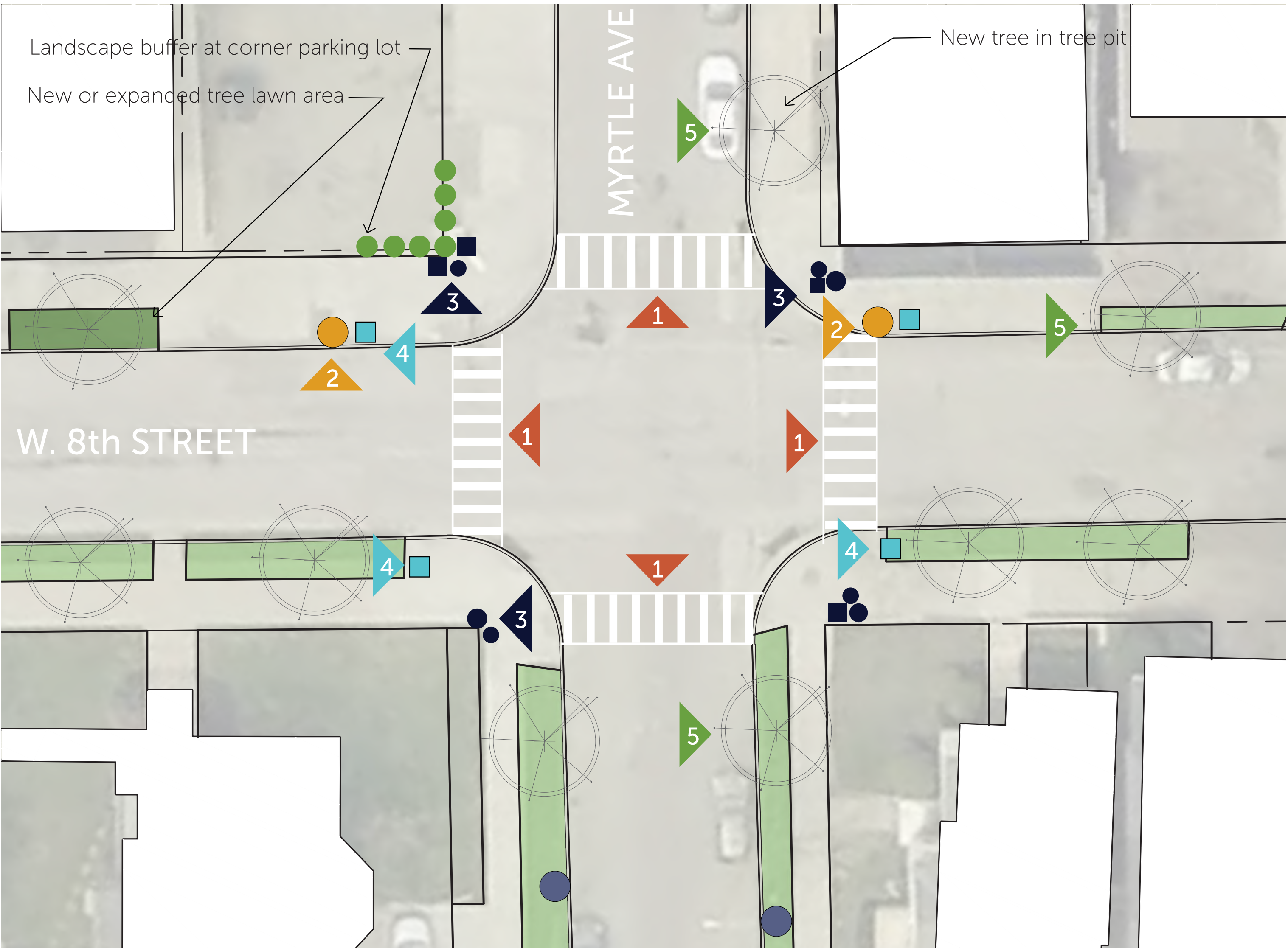
Chestnut Intersection



- 1 Painted Crosswalks (x4)
 - Incorporate district-specific street art under crossing stripes
- 2 Pole location for district signage (x3)
- 3 Planter groupings (x4)
 - Tall pots with seasonal plantings
 - Varied shapes, sizes, heights
- 4 Trash receptacle location (x4)
 - OWB standard receptacle
- 5 Ornamental Street Trees (x11)
 - Species that provides seasonal color and interest
- 6 Pole location for artistic wrap or paint

Focus Area 4

Myrtle Intersection

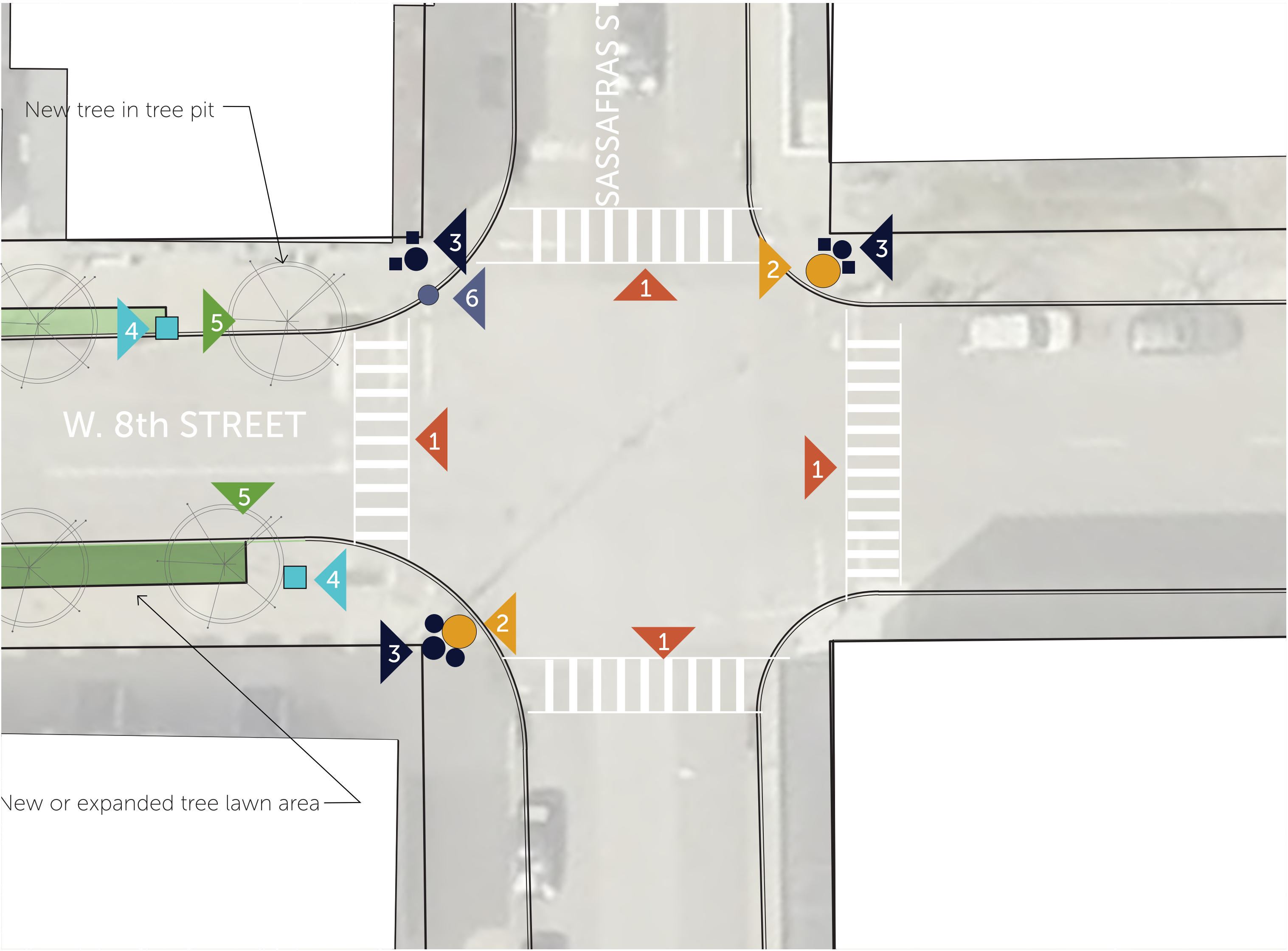


- 1 Painted Crosswalks (x4)
 - Incorporate district-specific street art under crossing stripes
- 2 Pole location for district signage (x2)
- 3 Planter groupings (x4)
 - Tall pots with seasonal plantings
 - Varied shapes, sizes, heights
- 4 Trash receptacle location (x4)
 - OWB standard receptacle
- 5 Ornamental Street Trees (x9)
 - Species that provides seasonal color and interest
- 6 Pole location for artistic wrap or paint

West 8th Street - Streetscape

Focus Area 5

Sassafras Intersection



- 1 Painted Crosswalks (x4)
 - Incorporate district-specific street art under crossing stripes
- 2 Pole location for district signage (x2)
- 3 Planter groupings (x3)
 - Tall pots with seasonal plantings
 - Varied shapes, sizes, heights
- 4 Trash receptacle location (x2)
 - OWB standard receptacle
- 5 Ornamental Street Trees (x2)
 - Species that provides seasonal color and interest
- 6 Pole location for artistic wrap or paint

Midblock Improvements

City-led

- Focused sidewalk repairs (Walnut Avenue - Myrtle Avenue)
- Focused curb repairs (Walnut Avenue - Myrtle Avenue)
- Street trees
- New & expanded tree lawns

OWB-led

- Additional pedestrian fixtures (Gannon style)
- Planter program - at businesses
- District banners
- Seasonal lighting on street trees (solar string lights)

Community-led

- Neighborhood planter baskets
- Seasonal decorations (corn stalks, pine roping, etc.)



Our West Bayfront



City Architecture

West 8th Street - Streetscape

West 8th Street

Focus Areas Before & After

Cherry
Intersection



Walnut
Intersection



Chestnut
Intersection



Myrtle
Intersection



Sassafras
Intersection



West 8th Street - Streetscape

Community Signage - Under Development

Welcome Signage



Street Banner Signage

